



# “Exceptional” Leadership Development

Your Reformed Suite of  
National Professional  
Qualifications



# Discover our National Professional Qualifications

<b>Introduction</b>	<b>1</b>
<b>Flexible Learning</b>	<b>2</b>
<b>National Professional Qualifications (NPQs)</b>	<b>4</b>
NPQ for Leading Teaching (NPQLT)	6
NPQ for Leading Behaviour and Culture (NPQLBC)	7
NPQ for Leading Teacher Development (NPQLTD)	8
NPQ for Senior Leadership (NPQSL)	9
NPQ for Headship (NPQH)	10
NPQ for Executive Leadership (NPQEL)	11
<b>Apprenticeships</b>	<b>12</b>
Senior Leader Apprentice (with NPQSL) Level 5	14
Executive Leader Apprentice (with NPQEL) Level 7	15



# Best Practice Network

Rated “an Exceptional Training Provider”  
by the DfE



Best  
Practice  
Network

**Best Practice Network** is an accredited, award-winning provider of training and professional development for schools and nurseries. In a recent quality review, our training and participant support was rated ‘exceptional’ by the DfE.

Home of the **Outstanding Leaders Partnership (OLP)**, our qualifications are all designed by serving school leaders and subject matter experts to support teachers at every stage of their career. As a leading provider of National Professional Qualifications (NPQs), we develop the leadership capabilities of thousands of middle leaders, senior leaders, headteachers and executive leaders across the country every year.

In March 2021, we were appointed by the DfE as a national provider for the Early Career Framework (ECF) reforms. This enables us to work in partnership with schools and Teaching School Hubs to deliver a structured 2 year package of training and support for Early Career Teachers and their Mentors, supporting the DfE’s teacher recruitment and retention strategy.

We complement this with a suite of accredited CPD programmes including Early Years Initial Teacher Training (EYITT), the National Award for SEN Coordination (NASENCO), Higher Level Teaching Assistant Status (HLTA), Level 4 Diploma for School Business Managers (DSBM) as well as a growing range of apprenticeships.



## A flexible way to learn

Participants on Best Practice Network programmes get access to the highest quality development – crafted by former and practising education professionals and CPD experts and delivered in a way that is attuned to demanding work schedules.

Highly experienced facilitators – each one a practising expert in their field – work closely with participants from start to finish. Most of our programmes offer a blended approach that mixes online learning through our award-winning virtual learning environment and face-to-face learning through our national network of school-based providers.

And if getting out of school or setting is an issue, participants on some programmes can choose to learn exclusively online.

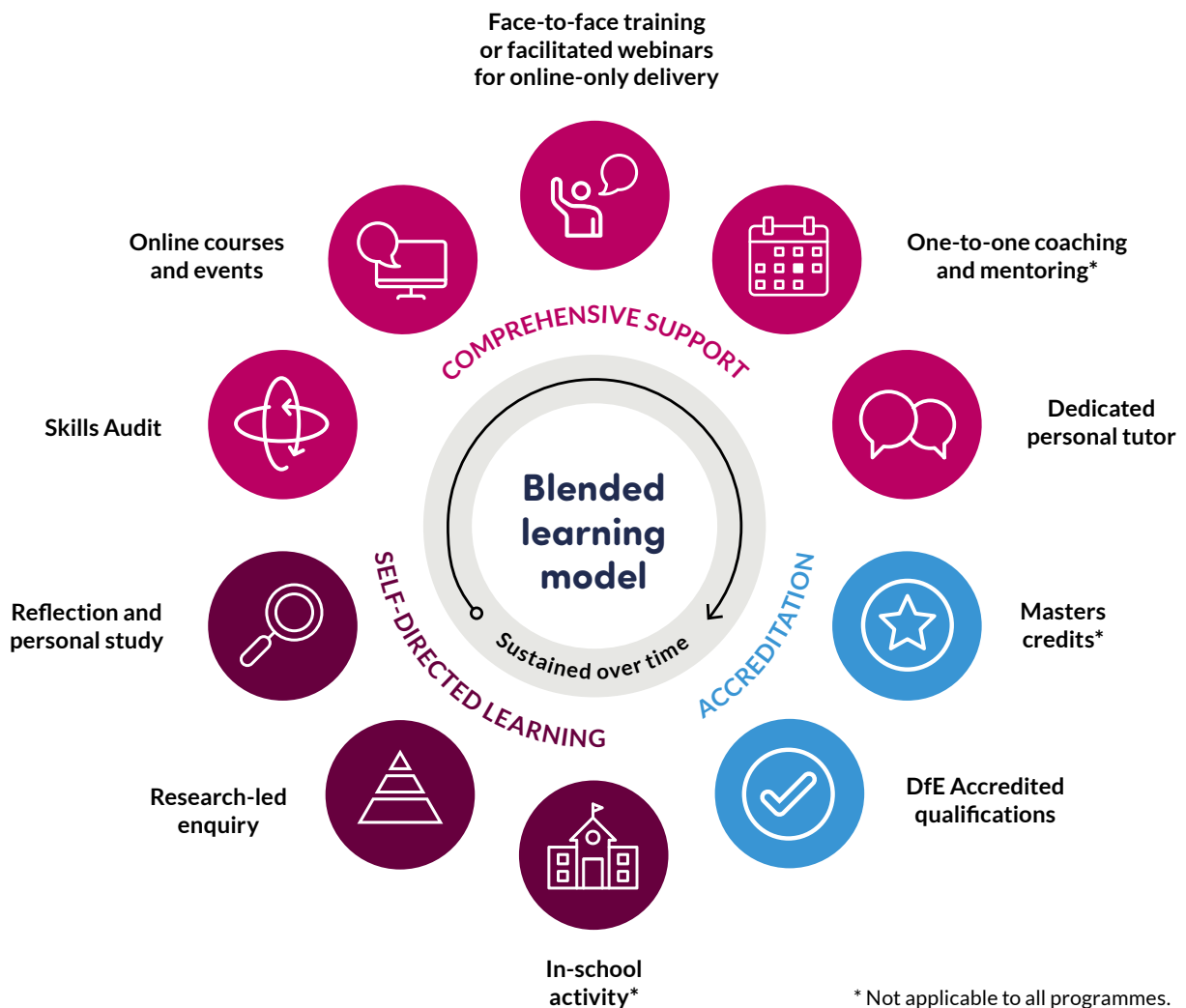
Whatever the learning approach, each participant gets access to a dedicated learning coach, mentor, or tutor, as well as regular opportunities to network and collaborate with their course colleagues.

## Our blended learning model

Our programmes make use of a blended delivery model consisting of face-to-face events, online study, and webinars.

Participants will attend face-to-face events if they choose to complete the programme via the blended delivery model. Our nationwide delivery network allows us to bring face-to-face training to a school near you and facilitated by local school leaders or local experts.

Participants access online learning and support via our virtual learning environment (VLE) Canvas. Through Canvas, participants are able to engage with their peers, access multimedia content, submit work for assessment and receive quality feedback from their mentor or tutor.



## Online-only delivery

Participants can choose to complete our programmes via our online delivery model. This approach includes facilitated online webinars as well as extra tutor support.



As a leading NPQ provider, Outstanding Leaders Partnership is able to offer all six of the reformed NPQs

# National Professional Qualifications

From September 2021, a reformed suite of NPQs is available to teachers and leaders. The reformed suite of qualifications includes a number of improvements and additions.



## How are the NPQs being reformed?

To best address the broad range of responsibilities of current and aspiring middle leaders, the Middle Leadership NPQ has been replaced with three new specialist NPQs.

These specialist qualifications are:

- National Professional Qualification for Leading Teaching (NPQLT)
- National Professional Qualification for Leading Behaviour and Culture (NPQLBC)
- National Professional Qualification for Leading Teacher Development (NPQLTD)

The reformed suite of leadership NPQs includes:

- National Professional Qualification for Senior Leadership (NPQSL)
- National Professional Qualification for Headship (NPQH)
- National Professional Qualification for Executive Leadership (NPQEL)

For more information, please visit [outstandingleaders.org/npq](https://outstandingleaders.org/npq)

## Why take a reformed NPQ?

NPQs are suitable for school leaders at each stage of their career.

Benefits for schools include:

- ✓ Increased workforce capacity, capability and confidence
- ✓ Staff retention and succession
- ✓ Research-based improvement activity addressing priority needs

**“Last week I was delighted to learn that I was successful in my NPQEL assessment.**

The on-going guidance and advice from OLP and BPN was really valuable. The range of resources provided helped me to remain organised and focussed and made tracking my progress through the programme easier.”

Lyndon Evans, Executive Principal,  
Aspire Academies Trust

### OUR PROGRAMME LEAD

Yvonne is passionate about ensuring schools and academies have the best leaders. She has extensive national, regional and local experience working in the areas of school improvement, the self-improving school system, leadership professional development and training.



**Yvonne Gandy**  
Programme Lead:  
NPQ

# NPQ for Leading Teaching (NPQLT)

Completion of this qualification leads to the  
**National Professional Qualification for Leading Teaching**

## Who is it for?

Colleagues with at least 3 years teaching experience. NPQLT is suitable for teachers who have, or are aspiring to have, responsibilities for leading teaching in a subject, year group, key stage or phase.

## How is it delivered?

There are two delivery options when taking the NPQLT. Participants will usually complete the qualification within 12 months and undertake a summative assessment task at the end of this period. You can choose to complete the programme via our traditional blended delivery model or via an online-only option.

Our blended delivery model consists of 3 face-to-face events, online study, webinars and coaching. Our nationwide delivery network allows us to bring face-to-face training to a school near you and facilitated by local school leaders.

Participants access online learning and support via our virtual learning environment (VLE), Canvas. Through Canvas, participants are able to engage with their peers, access multimedia content and submit work for assessment.

The online-only delivery option replaces the face-to-face events with facilitated webinars as well as extra tutor support.

## What do I need?

A signed declaration from your headteacher in which they agree to support you through the programme and confirm that the school will finance the cost of the course.

## Benefits

NPQLT gives participants all of the essential knowledge, skills and concepts that underpin successful leadership of teaching. Participants will learn how to:

- ✓ Contribute to the creation of a culture of high expectations across the school
- ✓ Support colleagues to plan effective lessons
- ✓ Support colleagues to avoid common assessment pitfalls
- ✓ Encourage colleagues to use high quality, reliable assessment without creating unnecessary workload
- ✓ Access and draw on the best available evidence and research

**Apprenticeship funded route coming soon.**  
Contact us to learn more.

### AT A GLANCE

Course Duration: **12 months**  
Face-to-Face Events: **3 events**  
Online Learning: **38 hours**  
Coaching: **6 hours**  
Total Learning Hours: **82 hours**  
Final Assessment: **Case study scenario**

★ **Masters credits available**

Learn more at [outstandingleaders.org/NPQLT](https://outstandingleaders.org/NPQLT)



# NPQ for Leading Behaviour and Culture (NPQLBC)

Completion of this qualification leads to the **National Professional Qualification in Leading Behaviour and Culture**

## Who is it for?

Colleagues with at least 3 years teaching experience. NPQLBC is for teachers who have, or are aspiring to have, responsibilities for leading behaviour and/or supporting pupil wellbeing in their school.

## How is it delivered?

There are two delivery options when taking the NPQLBC. Participants will usually complete the qualification within 12 months and undertake a summative assessment task at the end of this period. You can choose to complete the programme via our traditional blended delivery model or via an online-only option.

Our blended delivery model consists of 3 face-to-face events, online study, webinars and coaching. Our nationwide delivery network allows us to bring face-to-face training to a school near you and facilitated by local school leaders.

Participants access online learning and support via our virtual learning environment (VLE), Canvas. Through Canvas, participants are able to engage with their peers, access multimedia content and submit work for assessment.

The online-only delivery option replaces the face-to-face events with facilitated webinars as well as extra tutor support.

## What do I need?

A signed declaration from your headteacher in which they agree to support you through the programme and confirm that the school will finance the cost of the course.

## Benefits

NPQLBC gives participants all of the essential knowledge, skills and concepts that underpin successful leadership of culture and behaviour. Participants will learn how to:

- ✓ Contribute to the creation of a culture of high expectations across the school
- ✓ Support the development of a positive, predictable and safe environment for pupils
- ✓ Support pupils who need more intensive support with their behaviour
- ✓ Align professional development priorities related to behaviour and culture with wider school improvement priorities
- ✓ Access and draw on the best available evidence and research

**Apprenticeship funded route coming soon.**  
Contact us to learn more.

### AT A GLANCE

Course Duration: **12 months**  
 Face-to-Face Events: **3 events**  
 Online Learning: **38 hours**  
 Coaching: **6 hours**  
 Total Learning Hours: **82 hours**  
 Final Assessment: **Case study scenario**

★ **Masters credits available**

Learn more at [outstandingleaders.org/NPQLBC](https://outstandingleaders.org/NPQLBC)

# NPQ for Leading Teacher Development (NPQLTD)

Completion of this qualification leads to the **National Professional Qualification for Leading Teacher Development**

## Who is it for?

Colleagues with at least 3 years teaching experience. NPQLTD is for teachers who have, or are aspiring to have, responsibilities for leading the development of other teachers in their school. They may have responsibilities for the development of all teachers across a school or specifically trainees or teachers who are early in their career.

## How is it delivered?

There are two delivery options when taking the NPQLTD. Participants will usually complete the qualification within 12 months and undertake a summative assessment task at the end of this period. You can choose to complete the programme via our traditional blended delivery model or via an online-only option.

Our blended delivery model consists of 3 face-to-face events, online study, webinars and coaching. Our nationwide delivery network allows us to bring face-to-face training to a school near you and facilitated by local school leaders.

Participants access online learning and support via our virtual learning environment (VLE), Canvas. Through Canvas, participants are able to engage with their peers, access multimedia content and submit work for assessment.

The online-only delivery option replaces the face-to-face events with facilitated webinars as well as extra tutor support.

## What do I need?

A signed declaration from your headteacher in which they agree to support you through the programme and confirm that the school will finance the cost of the course.

## Benefits

NPQLTD gives participants all of the essential knowledge, skills and concepts that underpin successful leadership of teacher development. Participants will learn how to:

- ✓ Become adept in supporting initial teacher training, Early Career Teachers and the wider development of all colleagues across the school
- ✓ Develop expertise across a number of specialist areas related to their role (e.g. designing professional development)
- ✓ Review and evaluate practice in order to get the best outcomes for staff and young people
- ✓ Make evidence-based decisions and approach leading teacher development in an effective and efficient manner
- ✓ Access and draw on the best available evidence and research

**Apprenticeship funded route coming soon.**  
Contact us to learn more.

### AT A GLANCE

Course Duration: **12 months**  
Face-to-Face Events: **3 events**  
Online Learning: **38 hours**  
Coaching: **6 hours**  
Total Learning Hours: **82 hours**  
Final Assessment: **Case study scenario**

★ **Masters credits available**

Learn more at [outstandingleaders.org/NPQLTD](https://outstandingleaders.org/NPQLTD)

# NPQ for Senior Leadership (NPQSL)

Completion of this qualification leads to the  
**National Professional Qualification in Senior Leadership**

## Who is it for?

NPQSL is suitable for senior leaders with cross-school responsibilities, for example, an experienced middle leader, a deputy head, a special educational needs co-ordinator (SENCO), an advanced skills teacher or a senior member of staff.

## How is it delivered?

NPQSL makes use of a blended delivery model consisting of face-to-face events, online study, webinars and coaching. Participants will complete the qualification within 18 months and undertake a summative assessment task at the end of this period.

Participants will attend 4 face-to-face events. Our nationwide delivery partnership network allows us to bring face-to-face training to a school near you and facilitated by local school leaders.

Participants access online learning and support via our virtual learning environment (VLE) Canvas. Through Canvas, participants are able to engage with their peers, access multimedia content and submit work for assessment.

NPQSL participants can choose to complete the programme via our virtual online delivery model. This delivery model includes virtual live events to replace face-to-face events.

## What do I need?

A signed declaration from your headteacher in which they agree to support you through the programme and confirm that the school will finance the cost of the course.

## Benefits

- ✓ Improve outcomes for pupils in participant areas of responsibility
- ✓ Develop your confidence to effectively take on a leadership role and support your team
- ✓ Critically evaluate your own leadership practice
- ✓ Create your own flexible study plan around other work and personal commitments
- ✓ Access cutting-edge leadership theory and engaging online multimedia content
- ✓ Facilitation and support from serving school leaders
- ✓ Access and draw on the best available evidence and research

**Apprenticeship funded route available.**  
See page 14.

### AT A GLANCE

Course Duration: **18 months**

Face-to-Face Events: **4 events**

Online Learning: **38 hours**

Coaching: **10 hours**

Total Learning Hours: **98 hours**

Final Assessment: **Case study scenario**

★ **Masters credits available**

Learn more at [outstandingleaders.org/npqsl](https://outstandingleaders.org/npqsl)

# NPQ for Headship (NPQH)

Completion of this qualification leads to the  
**National Professional Qualification in Headship**

## Who is it for?

NPQH is suitable for those who have recently been made headteachers or who are highly motivated to become headteachers, and no more than 18 months from applying for headship.

## How is it delivered?

NPQH makes use of a blended delivery model consisting of face-to-face events, online study, webinars and coaching. Participants will complete the qualification within 18 months and undertake a summative assessment task at the end of this period.

Participants will attend 5 face-to-face events. Our nationwide delivery partnership network allows us to bring face-to-face training to a school near you and facilitated by local school leaders.

Participants access online learning and support via our virtual learning environment (VLE) Canvas. Through Canvas, participants are able to engage with their peers, access multimedia content and submit work for assessment.

NPQH participants can choose to complete the programme via our virtual online delivery model. This delivery model includes virtual live events to replace face-to-face events.

## What do I need?

A signed declaration from your headteacher or executive headteacher in which they agree to support you through the programme.

## Benefits

- ✓ Improve outcomes for pupils and staff within your school
- ✓ Develop your confidence to effectively lead and support the whole school
- ✓ Critically evaluate your own leadership practice
- ✓ Create your own flexible study plan around other work and personal commitments
- ✓ Access cutting-edge leadership theory and engaging online multimedia content
- ✓ Facilitation and tutor support from serving school leaders
- ✓ Gain valuable support from an experienced leadership coach to hone your leadership skills
- ✓ Access and draw on the best available evidence and research

**Apprenticeship funded route coming soon.**  
Contact us to learn more.

### "I got the headship!"

The course was absolutely instrumental in my success at interview – I felt so confident because of my reading and the work we've done on the face-to-face days and projects. Thank you for your support and encouragement – it really helped."

Gaynor Jones,  
NPQH participant

### AT A GLANCE

Course Duration: **18 months**  
Face-to-Face Events: **5 events**  
Online Learning: **38 hours**  
Coaching: **10 hours**  
Total Learning Hours: **112 hours**  
Final Assessment: **Case study scenario**

★ **Masters credits available**

Learn more at [outstandingleaders.org/npqh](https://outstandingleaders.org/npqh)

# NPQ for Executive Leadership (NPQEL)

Completion of this qualification leads to the  
**National Professional Qualification in Executive Leadership**

## Who is it for?

Colleagues who have been a headteacher for 3 years. NPQEL is suitable for colleagues aspiring to, or already in, leadership roles across more than one school. This includes headteachers, executive headteachers and directors of school improvement.

## How is it delivered?

NPQEL makes use of a blended delivery model consisting of face-to-face events, online study, webinars and coaching. Participants will complete the qualification within 18 months and undertake a summative assessment task at the end of this period.

Participants will attend 6 face-to-face events (including 1 x 2 day conference) via the blended delivery model. Our nationwide delivery partnership network allows us to bring face-to-face training to a school near you and facilitated by local school leaders.

Participants access online learning and support via our virtual learning environment (VLE) Canvas. Through Canvas, participants are able to engage with their peers, access multimedia content and submit work for assessment.

NPQEL participants can choose to complete the programme via our virtual online delivery model. This delivery model includes virtual live events to replace face-to-face events.

## What do I need?

A signed declaration from a senior staff member in which they agree to support you through the programme and confirm that the school will finance the cost of the programme.

## Benefits

- ✔ Improve outcomes for pupils and staff across your trust or school group
- ✔ Develop your confidence to effectively lead and support across several schools or a trust
- ✔ Critically evaluate your own leadership practice
- ✔ Create your own flexible study plan around other work and personal commitments
- ✔ Gain valuable support from an experienced leadership coach to hone your leadership skills
- ✔ Debate and discuss experience and learnings with other highly motivated peers
- ✔ Access cutting-edge leadership theory and engaging online multimedia content
- ✔ Access and draw on the best available evidence and research

**Apprenticeship funded route available.**  
See page 15.

### AT A GLANCE

Course Duration: **18 months**  
 Face-to-Face Events: **6 events (including 1 x 2-day conference)**  
 Online Learning: **38 hours**  
 Coaching: **10 hours**  
 Total Learning Hours: **124 hours**  
 Final Assessment: **Case study scenario**

★ **Masters credits available**

Learn more at [outstandingleaders.org/npqel](https://outstandingleaders.org/npqel)



# Apprenticeships

Learn how apprenticeships can be used to recruit, upskill and retrain your staff.

## Understanding Apprenticeships for Schools

All schools and nurseries have access to ring-fenced funding to support staff at all levels onto apprenticeship training programmes.

Apprenticeships are work-based training programmes designed to help employers train individuals for specific job roles.

- An apprenticeship can be for new and existing staff
- Apprenticeship training can be from Level 2 (GCSE equivalent) through to Level 7 (Masters level)

Best Practice Network is a national apprenticeship provider working exclusively with schools and nurseries to deliver apprenticeship training in leadership and the early years.

Learn more at [bestpracticenetwork.co.uk/apprenticeships](https://bestpracticenetwork.co.uk/apprenticeships)

# Off-the-job training

Apprentices are required to spend 20% of their working hours acquiring new workplace skills, knowledge and behaviours. However, this includes any work-place activities that bring new learning.



## The Apprenticeship Levy

Our programmes qualify for funding from the English apprentice levy fund. Employers with a salary bill over £3m per annum are required to pay 0.5% of their salary bill into the levy. These funds are ring-fenced for apprenticeship programmes and after two years unused funds are lost.

If your organisation does not pay into the levy, then it always co-invests with the government. The maximum amount your organisation will pay for apprenticeship training is 5% of the total cost.

## Accessing levy funding

Best Practice Network can support your school or setting to engage staff on apprenticeship training and access levy funding.

- **Levy paying Academies and Trusts:** Drawn down directly using your Apprenticeship Service Account
- **Maintained schools (LA funded):** Drawn down by the Local Authority from their levy fund
- **Non-levy paying schools:** Education Skills Funding Agency (ESFA) will fund 95% of the course fee through the 'co-investment' scheme

### OUR APPRENTICESHIP LEAD

Tracy is passionate about apprenticeships and the opportunities they bring for new and existing staff to gain new knowledge, skills and behaviours in the workplace. With a background in lecturing and apprenticeships in a large FE College, she has extensive experience of managing and delivering apprenticeships in a range of sectors.



**Tracy Clement**  
Apprenticeship Lead

# Senior Leader Apprentice (with NPQSL) Level 5

Completion of this programme leads to the **Level 5 Operations/Departmental Manager apprenticeship standard** and the **National Professional Qualification in Senior Leadership**

## Who is it for?

This dual award is for those who are, or aspire to become, a senior leader with cross-school responsibilities such as an experienced middle leader, a SEN coordinator, an assistant headteacher, or other senior staff.

## How is it delivered?

Facilitated delivery takes place over an 18-month period with participants submitting a summative assessment task at the end of the 18 months.

Delivery comprises four face-to-face events, three facilitated 3-week core online courses, quarterly school visits, monthly one-to-one review meetings, regular support webinars, work practice activity and end point assessment.

There are two possible start dates per year, one in the autumn term and one in the spring term.

Groups are hosted by a national network of trust and teaching school hub partners ensuring programme content and peer engagement is tailored to reflect local needs.

## What do I need?

- Support from your headteacher and levy account holder
- 5 GCSE's at Grade C (4) including English and Maths, or able to achieve Level 2 English and Maths whilst on programme
- Must have held residency in the UK for the last three years

## Benefits

- ✓ Nationally accredited and locally delivered qualifications tailored to your needs
- ✓ NPQ training with an added focus on behaviour and skills development
- ✓ Support the succession of school leaders and build cohesive, effective teams
- ✓ Unparalleled support from expert apprenticeship tutors and programme facilitators to check learning and development needs
- ✓ Access cutting-edge leadership theory and engaging online multimedia content
- ✓ Develop your confidence to effectively take on a leadership role and support your team
- ✓ Access and draw on the best available evidence and research

---

Available from September 2021.

Please contact us for more information: [cpd@bestpracticenet.co.uk](mailto:cpd@bestpracticenet.co.uk)



# Executive Leader Apprentice (with NPQEL) Level 7

Completion of this programme leads to the **Level 7 Senior Leader apprenticeship standard** and the **National Professional Qualification in Executive Leadership**

## Who is it for?

This dual award is suitable for colleagues aspiring to, or already in, leadership roles across several schools or a trust. This includes headteachers, executive headteachers and directors of school improvement.

## How is it delivered?

Facilitated delivery takes place over an 18-month period with participants submitting a summative assessment task at the end of the 18 months.

Delivery comprises six face-to-face events (includes one residential), three facilitated 3-week online core courses, quarterly school visits, monthly one-to-one review meetings, regular support webinars, work practice activity and end point assessment.

There are two possible start dates per year, one in the autumn term and one in the spring term.

Groups are hosted by a national network of trust and teaching school partners ensuring programme content and peer engagement is tailored to reflect local needs.

## What do I need?

- Support from your school or trust and levy account holder
- 5 GCSE's at Grade C (4) including English and Maths, or able to achieve Level 2 English and Maths whilst on programme
- Must have held residency in the UK for the last three years

## Benefits

- ✓ Increased capability and capacity to lead multi-school development, improving outcomes for pupils across the school group or trust
- ✓ Increased understanding of self and of the behaviours needed to lead at executive leadership level
- ✓ Time to reflect on leadership practice and ability to check learning and development needs
- ✓ Unparalleled support from expert apprenticeship tutors and programme facilitators to check learning and development needs
- ✓ Access cutting-edge leadership theory and engaging online multimedia content
- ✓ Gain valuable support from an experienced leadership coach to hone your leadership skills
- ✓ Access and draw on the best available evidence and research

Available from September 2021.

Please contact us for more information: [cpd@bestpracticenet.co.uk](mailto:cpd@bestpracticenet.co.uk)

**Best Practice Network** is a national provider of training, development, and support for education professionals with 97% of our participants recommending us to a colleague.

Home of **Outstanding Leaders Partnership**, a national network of teaching school hubs, trusts and dioceses, we work in close partnership with practising education professionals to develop and deliver high-quality training programmes.

## Learn more

+44 (0) 117 920 9200  
info@outstandingleaders.org  
outstandingleaders.org



## Further information:

Please contact Harinder Jandu at ConnectEd Partnership  
harinder.jandu@connectedpartnership.com  
01902 290152



Accredited NPQ provider

